

Contents lists available at [ScienceDirect](https://www.sciencedirect.com)

Food Policy

journal homepage: www.elsevier.com/locate/foodpol

Corrigendum

Corrigendum to “Viewpoint: Rigorous monitoring is necessary to guide food system transformation in the countdown to the 2030 global goals” [Food Policy 104 (2021) 100784]

Jessica Fanzo ^{a,b,c,*}, Lawrence Haddad ^{d,1,2}, Kate R. Schneider ^{a,1}, Christophe Béné ^{e,3}, Namukolo M. Covic ^{f,3}, Alejandro Guarin ^{g,3}, Anna W. Herforth ^{h,3}, Mario Herrero ^{i,3}, U. Rashid Sumaila ^{j,3}, Nancy J. Aburto ^k, Mary Amuyunzu-Nyamongo ^l, Simon Barquera ^m, Jane Battersby ⁿ, Ty Beal ^d, Paulina Bizzotto Molina ^o, Emery Brusset ^p, Carlo Cafiero ^k, Christine Campeau ^q, Patrick Caron ^r, Andrea Cattaneo ^k, Piero Conforti ^k, Claire Davis ^b, Fabrice A.J. DeClerck ^s, Ismahane Elouafi ^k, Carola Fabi ^k, Jessica A. Gephart ^t, Christopher D. Golden ^u, Sheryl L. Hendriks ^v, Jikun Huang ^w, Amos Laar ^x, Rattan Lal ^y, Preetmoninder Lidder ^k, Brent Loken ^z, Quinn Marshall ^c, Yuta J. Masuda ^{aa}, Rebecca McLaren ^b, Lynnette M. Neufeld ^d, Stella Nordhagen ^d, Roseline Remans ^{ab}, Danielle Resnick ^{ac}, Marissa Silverberg ^c, Maximo Torero Cullen ^k, Francesco N. Tubiello ^k, Jose-Luis Vivero-Pol ^{ad}, Shijin Wei ^{ae}, Jose Rosero Moncayo ^{k,2}

^a Nitze School of Advanced International Studies, Johns Hopkins University, 1717 Massachusetts Avenue, NW #730, Washington, DC 20036, USA

^b Berman Institute of Bioethics, Johns Hopkins University, 1809 Ashland Avenue, Baltimore, MD 21205, USA

^c Bloomberg School of Public Health, Johns Hopkins University, 615 N Wolfe St, Baltimore, MD 21205, USA

^d The Global Alliance for Improved Nutrition, Rue Varembe 7, 1202, Geneva, Switzerland and 1701 Rhode Island Ave NW, Washington, DC 20036, USA

^e International Center for Tropical Agriculture, Km 17 Recta Cali-Palmira, Zip Code 763537, Apartado Aéreo, 6713 Cali, Valle del Cauca, Colombia

^f Agriculture for Nutrition and Health, International Food Policy Research Institute, C/O ILRI, Bole Sub-City, Kebele no 13, Box 5689, Addis Ababa, Ethiopia

^g Shaping Sustainable Markets, International Institute for Environment and Development (IIED), Third Floor, 235 High Holborn, London WC1V 7DN, UK

^h Department of Global Health and Population, Harvard T.H. Chan School of Public Health, 677 Huntington Ave, Boston, MA 02115, USA

ⁱ Department of Global Development, College of Agriculture and Life Sciences, Cornell University, 215 Garden Avenue, Ithaca, NY 14850, USA

^j Institute for the Oceans and Fisheries and the School of Public Policy and Global Affairs, University of British Columbia, AERL, 2202 Main Mall, Vancouver, BC V6T 1Z4, Canada

^k Food and Agriculture Organization of the United Nations, Viale delle Terme di Caracalla, 00153 Rome, Italy

^l Advisory Department, African Institute for Health and Development, Commodore Office Suites 7th Floor, Suite 7B, Kindaruma Road, Kilimani, P. O. Box 45259-00100, Nairobi, Kenya

^m National Institute of Public Health, Universidad 655, Cuernavaca, Morelos, Mexico

ⁿ Department of Environmental and Geographical Science, and African Centre for Cities, University of Cape Town, Environmental and Geographical Science Building, South Lane, Upper Campus, University of Cape Town, 7701 Rondebosch, South Africa

^o European Centre for Development Policy Management (ECDPM), Onze Lieve Vrouweplein 21, 6211 HE Maastricht, Netherlands

^p Programme Division, United Nations World Food Programme, Via Cesare Giulio Viola 68 Parco dei Medici 00148, Rome, Italy

^q Food Systems Policy and Advocacy Department, CARE, 1100 17th St NW Suite 900, Washington, DC 20036, USA

^r University of Montpellier, 163 rue Auguste Broussonnet, 34090 Montpellier, France

^s EAT, Montpellier, France, The Alliance of Bioversity International and CIAT, Viale Tre Denari, 472, 00054 Maccarese-Stazione RM, Italy

^t American University, 4400 Massachusetts Ave NW, Washington, DC 20016, USA

^u Department of Nutrition, Harvard T.H. Chan School of Public Health, 677 Huntington Ave, Boston, MA 02115, United States

^v University of Pretoria, Department of Agricultural Economics, Extension and Rural Development, Room 3-22 Agriculture Annex, Lynnwood Road, Hatfield, Pretoria 0028, South Africa

^w China Center for Agricultural Policy, Peking University, No 5 Yiheyuan Road, Beijing, China

^x Department of Population, Family & Reproductive Health, School of Public Health, University of Ghana, LG 13 Accra, Ghana

^y CFAES Dr. Rattan Lal Carbon Management and Sequestration Center (C-MASC), and the School of Environment and Natural Resources (SENR), The Ohio State University, 422 B Kottman Hall, 2021 Coffey Road, Columbus, OH 43210, USA

DOI of original article: <https://doi.org/10.1016/j.foodpol.2021.102163>.

* Corresponding author at: Nitze School of Advanced International Studies, Johns Hopkins University, 1717 Massachusetts Avenue, NW #730, Washington, DC 20036 USA.

E-mail address: jfanzo1@jhu.edu (J. Fanzo).

<https://doi.org/10.1016/j.foodpol.2022.102233>

0306-9192/© 2021 The Author(s). Published by Elsevier Ltd. This is an open access article under the CC BY-NC-ND license

(<http://creativecommons.org/licenses/by-nc-nd/4.0/>).

Please cite this article as: Jessica Fanzo, *Food Policy*, <https://doi.org/10.1016/j.foodpol.2022.102233>

^z Global Science, WWF Sweden Ulriksdals Slott, 170 81 Solna, Sweden

^{aa} The Nature Conservancy, 4245 Fairfax Dr #100, Arlington, VA 22203, USA

^{ab} Multifunctional Landscapes, The Alliance of Bioversity International and CIAT, Viale Tre Denari, 472, 00054 Maccarese-Stazione RM, Italy

^{ac} Development Strategy and Governance Division, International Food Policy Research Institute, 1201 Eye Street NW, Washington, DC 20005, USA

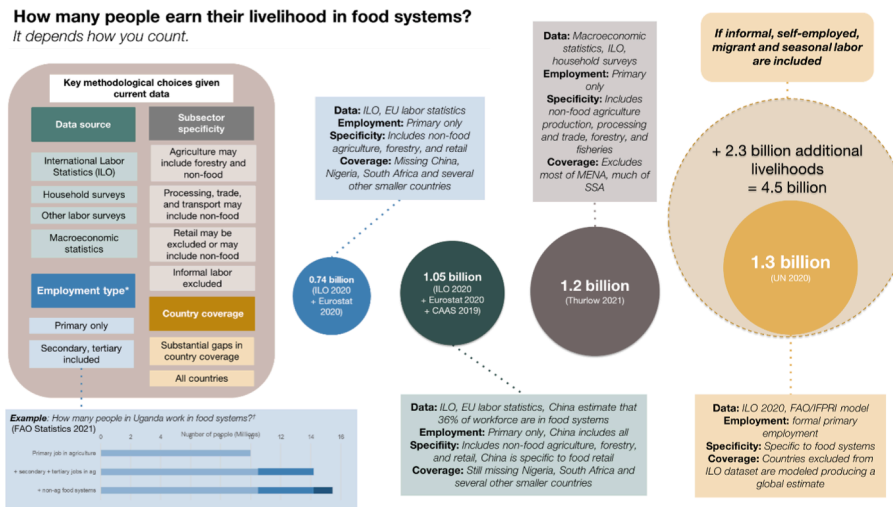
^{ad} Humanitarian and Development Division, Global Network against Food Crises, United Nations World Food Programme, Via Cesare Giulio Viola, 68 Parco dei Medici 00148, Rome, Italy

^{ae} Whiting School of Engineering, Johns Hopkins University, 3400 N Charles St, Baltimore, MD 21218, USA

We regret that the original Fig. 3 was based on a spreadsheet later discovered to have an aggregation error, overestimating the number of food system workers. A corrected Fig. 3 has replaced the erroneous figure. We are deeply grateful to Natalia Piedrahita of FAO for her careful attention and discovery of the error.

person spent the most time within a reference period (prior seven days, one month, and/or 12 months, depending on the country), defining primary and secondary activities based on reported time allocation.

**Circles drawn to scale. †Uganda estimate computed by FAO Statistics using the Uganda National Panel Survey, 2013–14 and FAO Rural Livelihoods Information System (RuLIS). May undercount work in food



Legend: * Official labor statistics (i.e., International Labour Organization [ILO] statistics) count a person as employed if they worked for at least one hour in the reference period for pay or profit (ILO, n.d.) Multi-topic household surveys typically ask about the activities in which a

retail and services.

Sources: (Chinese Academy of Agricultural Sciences, 2019; Eurostat, 2020; ILOSTAT, 2020; United Nations, 2020).

The authors would like to apologise for any inconvenience caused.

¹ Co-first authors.

² Co-principal investigators.

³ Leads of thematic area working groups.