

October 7, 2020



# UPCEA<sup>®</sup>

LEADERS IN PROFESSIONAL, CONTINUING,  
AND ONLINE EDUCATION

[www.upcea.edu](http://www.upcea.edu)

**CSSW Annual Online Faculty Development Series:  
2020 Faculty and Staff Development Award**

*Matthea Marquart, Krystal Folk*

 **COLUMBIA**  
SCHOOL OF SOCIAL WORK



# Overview of CSSW Online Campus Faculty Development Overall

Successfully completed



SUCCESSFULLY COMPLETED



Foundational training:

- 1) Institute on Pedagogy and Technology for Online Courses
- 2) Institute on Technical Skills for Online Event Production

Successfully completed



Successfully completed



Successfully completed



INTENSIVE WORKSHOP



Ongoing training:

- 1) Annual Online Faculty Development Series
- 2) Intensive Workshops

[Learn more about our Online Campus faculty development](#)



# Annual Online Faculty Development Series: Intro

- Launched during AY2018-19
- 5 sessions/year: the first in August before the fall semester and the last in May after the spring semester
- Live online sessions (2 hours each), recorded for asynchronous make-up options
- Scheduled in the evenings to accommodate adjunct availability across time zones
- Open to all Online Campus community members
- Goals: 1) Facilitate continuous learning & development, 2) Build and sustain an ongoing community
- Professional benefits to participants:
  - Learning, networking, reconnecting with colleagues
  - Digital badge
  - Free continuing education units for licensed social workers, available for live attendance only
  - Resume/CV language. Example:
    - Columbia University School of Social Work Online Faculty Development Series, Academic Year 2018-19. Completed a 5-session, yearlong post-Master's professional development series for online faculty, covering community-building in online courses, mindfulness and self-care exercises for online classes, online educational activities related to power/race/oppression/privilege, interactive and high-impact teaching and learning activities, and current trends in online social work education.



# Annual Online Faculty Development Series: Session Components

- Community agreements
- Celebrations of community members' milestones and achievements
- Presentations from students / alumni
- Introductions to CSSW deans and directors
- Mini-trainings on research re: social work online education
- CSSW news & updates, including pop quizzes
- Lightning round teaching and learning showcase presentations
  - Up to 12 presentations per session
  - Each presenter (or pair of co-presenters) has 2 minutes & 1 slide, to share something unique from an online course
  - Presenters include faculty (adjunct or full time), TAs (title at CSSW is “Associates”), and Live Support Specialists
  - Goals: 1) Elevate the voices of community members, 2) Share and cross-pollinate ideas, 3) Provide opportunities to present

# Lightning round teaching and learning



## showcase presentations: Examples



**Allison Ross** -- Reflections on preparing to teach my 20th online course at CSSW



**Amy Batchelor** -- Addressing accessibility online



**Anna Garriott** -- Quizlet digital flashcards for review



**Aparna Samuel Balasundaram & Lia Marshall** -- Dementia Care Community Resource Guide: Example of a non-disposable assignment



**Beth Counselman-Carpenter & Christine Holmes** -- Assignment to create a clinical practice notebook



**Bonnie Glass** -- Creating a community playlist



**Jennifer So** -- Publishing an article from a course assignment



**Johanna Creswell Báez** -- Reviewing semester content by creating a “Student Emmys” video from role plays



**Kevin Ram** -- Opening class with a meditation & poem



**Muhammed Garland** -- “Student Spotlight” activity



**Patricia Mura Desert** -- Creating virtual community as an online student

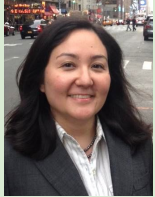


**Sarah Clem** -- Using vignettes to bring statistics to life

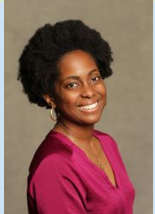


**Sierra Spriggs & Kristin Garay** -- Closing out a course with a virtual quilt of student contributions

# Connect with the Presenters & Learn More



**Matthea Marquart, MSSW**; Twitter @MattheaMarquart  
Assistant Dean, Online Education; Lecturer  
<https://www.linkedin.com/in/matthea-marquart/>



**Krystal Folk, LMSW**  
Live Support Specialist, Online Campus  
<https://www.linkedin.com/in/krystalfolk/>



**More about this series:** Marquart, M., Creswell Báez, J., and Folk, K. (2020, July 15). Fostering a culture of innovation by harnessing technology to enable inclusive faculty development. In Bounds, A.M. (Chair), *Social Justice, Innovation, and Relationality* [Panel presentation]. Online Presentation for The New School's Management & Social Justice Conversation Series, via Zoom. Slides deposited in Columbia University's Academic Commons: <https://doi.org/10.7916/d8-wgag-ey81> Recording available on YouTube: <https://youtu.be/BhCdL9f9mEc>