

magnolias in bloom

dani dobkin  
2022

## general

when unfired clay is reintroduced to water, the bone dry material breaks down back into mud. we can still hold on while it's decaying. even once its gone we can still hear it. this piece is a study in ephemerality. this piece is about process. this piece is about grief.

## instrumentation

for bone dry clay flute, ceramic percussion bowls, bassoon, electric guitar and trumpet.

## notation

the following is a graphic score. this piece requires close collaboration and workshopping with the composer to be realized. each flute has a different pitch, tonality may be adjusted accordingly. Some sections are literal, some sections are poetic. Audio Score will be provided to give a general idea of the composition.

## texture

cyclical yet unrepeating. like a sporadic drizzle on a metal roof.  
followed by rich generous timbres

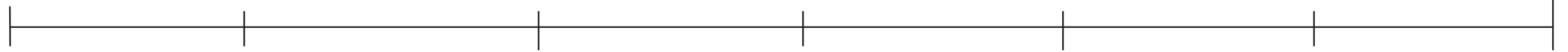
## timing

loose, all voices follow the flute. end in unison where necessary

written for International Contemporary Ensemble as part of Columbia Composer's 2022 season.

0'00''

3'00



**A** Windy, cyclical, percussive

Flute



discover the whistle tones of the instrument

slowly bring in pitch.  
slowly bring in vibrato

can you bend the note?

can you feel it getting warmer?

flutter tongue

Trumpet



slap tongue



continue to repeat in your own time signature

E.Guitar



assorted 5 7 12 fret harmonics,  
detune up and down while playing

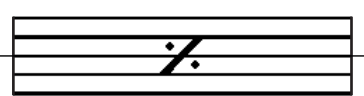


continue to repeat in your own time signature

Bassoon

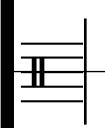


remove reed, slap tongue  
Blow, searching for whistle tones. Airy



continue to repeat in your own time signature

Percussion



sparse

rich

listen to the rhythms that surround you. explore the ceramic instruments while leaving space for others

generous

driving

militant

3'00"

6'00"

**B**

Fl



stop

dip your hand in water and play the instrument

find the fundamental

do you have anything you'd like to get off your chest?

hold it. it's fleeting

find yourself at peace.

squeeze down and allow the flute to break

pick up the pieces and place in the water.

Tr



wait

find the frequency of the flute

match the pitch of the flute and detune slightly as to create beating frequencies

hold the beating frequency until the flute breaks.

stop

Gtr



pause

using an ebow, find the note of the flute. shift register up or down slightly as to create beating frequencies

hold the beating frequency until the flute breaks.

stop

Bsn



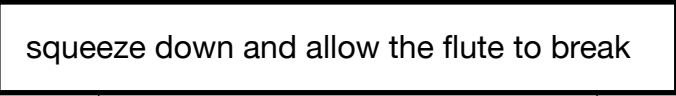
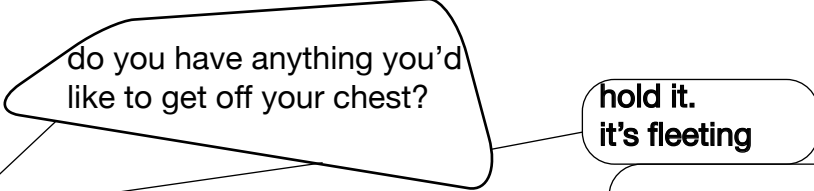
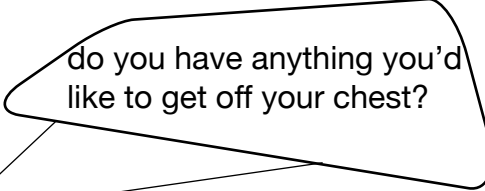
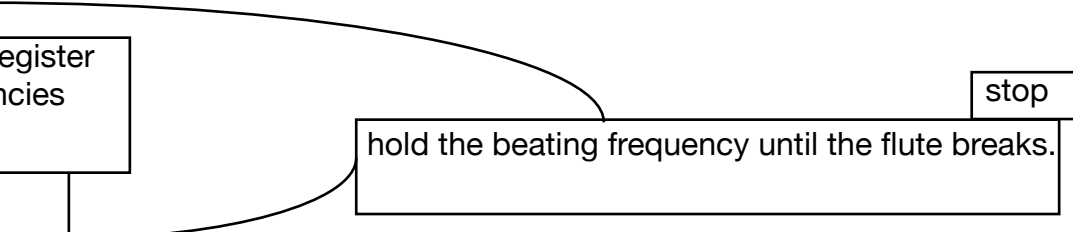
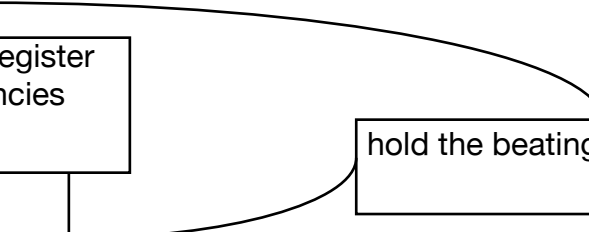
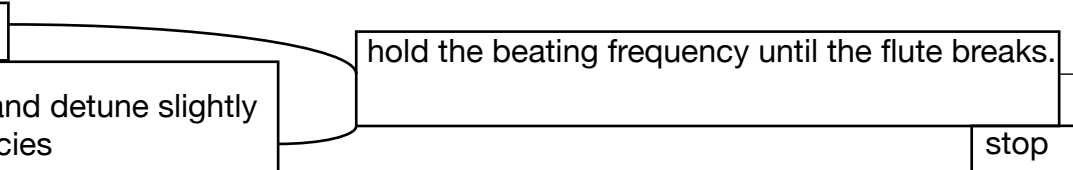
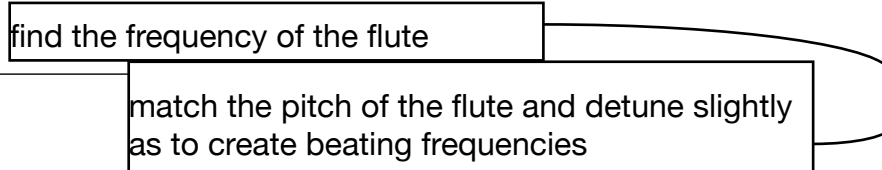
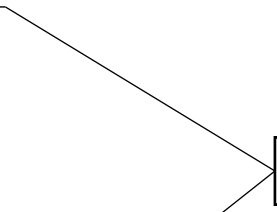
rest

listen

Perc



how do you embrace the world that surrounds you?



6'00"

8'00"

C

Fl



Tr



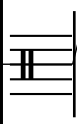
Gtr



Bsn



Perc



listen to the  
sound of the  
dissolving  
flute

multiphonics, wail.  
like a feedback loop  
rich with harmonics.

continue

keep going

stop.

