

POSTER PRESENTATION

Open Access

Assessment of left atrial systolic dyssynchrony in paroxysmal atrial fibrillation and heart failure using cardiac magnetic resonance imaging: MESA study

Luisa A Ciuffo^{1,2*}, Ravi Sharma¹, Mohammadali Habibi⁶, Bharath Ambale Venkatesh¹, Boaz D Rosen¹, Masamichi Imai¹, Steven Shea⁵, Robyn McClelland⁴, Colin O Wu³, Susan R Heckbert⁴, David Bluemke³, Joao A Lima¹

From 18th Annual SCMR Scientific Sessions
Nice, France. 4-7 February 2015

Background

Left atrial (LA) remodeling in response to cardiovascular and hemodynamic stress may precede atrial fibrillation (AF) and heart failure (HF). We hypothesized that LA systolic synchronous contraction as a functional measure of LA remodeling is deranged in patients with paroxysmal AF and HF.

Methods

We performed a nested case-control analysis with 1:2 matching for 39 cases of paroxysmal AF (n=28, in sinus rhythm during cardiac magnetic resonance (CMR)) and HF (n=14, AF+HF; n=3) and 78 controls with similar demographic and clinical characteristics at the baseline (Table 1). LA circumferential (short axis) and longitudinal strain rate (horizontal long axis) were measured using Multi-modality Tissue Tracking (Toshiba, Japan) from

short and long-axis cine CMR images. Circumferential LA systolic dyssynchrony among 18 LA segments (6 segments x 3 slices) was evaluated as; Standard Deviation (SD) of time to pre atrial contraction Strain rate (PreA Sr^c) and Peak systolic strain rate (Peak Sra^c) (Figure 1). Similarly, longitudinal LA dyssynchrony parameters (among 6 segments) were: SD-Time to pre-atrial contraction strain rate (PreA Sr^l) and SD-Time to peak systolic strain rate (Peak-Sra^l). Wilcoxon-rank sum test (non-parametric) or two sample t-test (parametric) were used for comparison between the groups.

Results

In participants during MESA exam 5 (age 74±8 years, 51.4% men), systolic circumferential dyssynchrony (SD-TP-PreA Sr^c, msec) was significantly higher in the cases compared to controls (45.06 vs. 28.73, p<0.010). Similarly,

Table 1 Left atrial circumferential and longitudinal systolic dyssynchrony parameters among the cases and the control group.

Parameters	Controls (n=78)			Cases (n=39) (paroxysmal AF + Heart Failure)			p-value
	Mean ±SD	Median	IQR	Mean ±SD	Median	IQR	
Longitudinal							
SD-TP PreA Sr ^L , msec	36.43 ± 33.53	27.40	15.50 - 46.13	51.62 ± 33.40	39.70	32.07 - 61.78	0.001
SD-TP Peak Sra ^L	35.92 ± 43.22	23.86	16.32 - 35.60	45.23 ± 42.04	32.50	22.98 - 44.54	0.027
Circumferential							
SD-TP PreA Sr ^c , msec	28.73±13.90	26.23	19.70 - 34.98	45.06 ± 30.25	35.49	24.84 - 57.03	0.010
SD-TP Peak Sra ^c , msec	28.95 ± 23.1	23.04	16.46 - 31.57	36.46 ± 30.93	26.83	17.45 - 44.02	0.316
LA maximum volume/BSA	33.79 ± 9.57	31.72	28.64 - 38.86	45.02 ± 17.85	44.38	31.04 - 56.44	<0.0001
Sra (%/ms)	-1.85 ± 0.85	-1.74	-2.18: -1.45	-1.03 ± 0.61	-1.04	-1.04: -0.53	<0.0001

Participants were matched for: Age, gender, race/ethnicity.

¹Johns Hopkins, Baltimore, MD, USA

Full list of author information is available at the end of the article

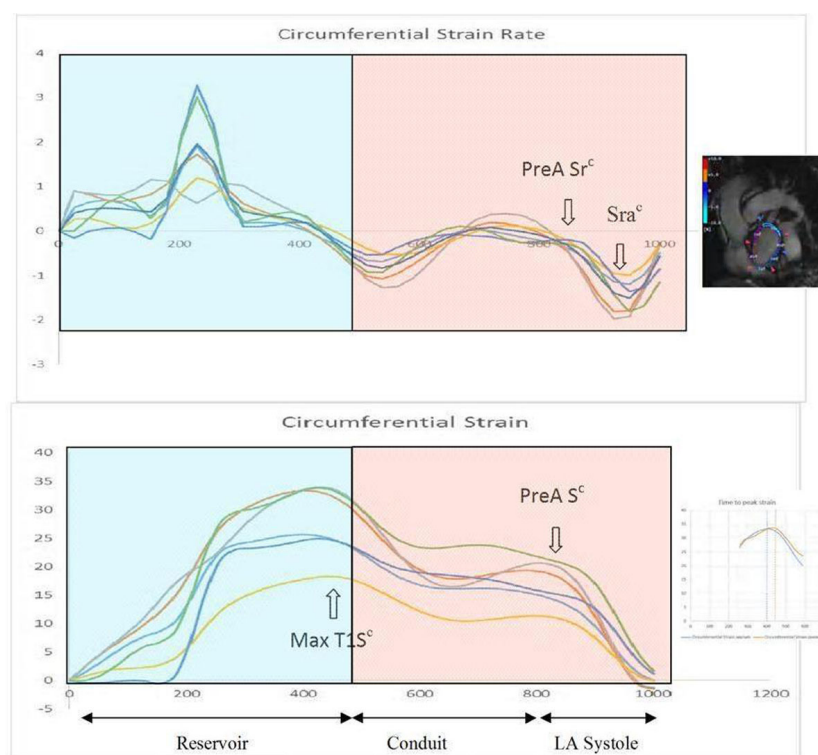


Figure 1 LA circumferential (panel A) and longitudinal (panel B) strain rate curves during a cardiac cycle using multimodality tissue tracking.

case group had greater longitudinal dyssynchrony than controls; SD-TP PreA Sr^L (51.62 vs. 36.43, $p=0.001$) and SD-TP-Peak Sra^L (45.23 vs. 35.92, $p=0.027$) (Table 1).

Conclusions

Patients with paroxysmal atrial fibrillation and heart failure have significantly higher LA circumferential and longitudinal systolic dyssynchrony compared to normal controls.

Funding

N/A.

Authors' details

¹Johns Hopkins, Baltimore, MD, USA. ²Universidade federal da Bahia, Salvador, Brazil. ³National Institutes of Health, Bethesda, MD, USA. ⁴University of Washington, Washington, DC, USA. ⁵Columbia University, New York, NY, USA. ⁶Union Memorial Hospital, Baltimore, MD, USA.

Published: 3 February 2015

doi:10.1186/1532-429X-17-S1-P322

Cite this article as: Ciuffo et al.: Assessment of left atrial systolic dyssynchrony in paroxysmal atrial fibrillation and heart failure using cardiac magnetic resonance imaging: MESA study. *Journal of Cardiovascular Magnetic Resonance* 2015 **17**(Suppl 1):P322.

Submit your next manuscript to BioMed Central and take full advantage of:

- Convenient online submission
- Thorough peer review
- No space constraints or color figure charges
- Immediate publication on acceptance
- Inclusion in PubMed, CAS, Scopus and Google Scholar
- Research which is freely available for redistribution

Submit your manuscript at
www.biomedcentral.com/submit

