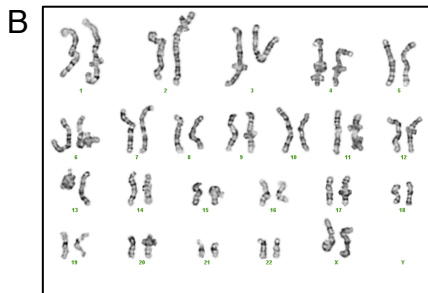


A	Gene	Scalp	Dura
	S100A4 (FSP1)	1	0.07
	ACTA2	1	0.44
	ANPEP (CD13)	1	0.56
	COL1A1	1	1.21
	COL1A2	1	1.16
	Desmin	1	0.55
	DDR2	1	0.92
	ITGA1	1	0.64
	ITGB1	1	0.84



ASC2S-MSA-CP  
(iPSC)



ASC2D-MSA-CP  
(iPSC)

**Additional File 1, Related to Figure 1: Characterization of Scalp and Dura-Derived iPSCs.** (A) RNA isolated from scalp and dural fibroblast lines from the same patient (ASC2S and ASC2D) were analyzed on the Illumina HumanHT-12-14 BeadChip platform as biological triplicate samples. Scorecard analysis comparing scalp and dural fibroblast microarray expression data for representative fibroblast markers. (B-C) ASC2D-MSA-CP (clone 2) and ASC2S-MSA-CP (clone 3) both display a normal female karyotype.