

Appendix 6

Additional figures

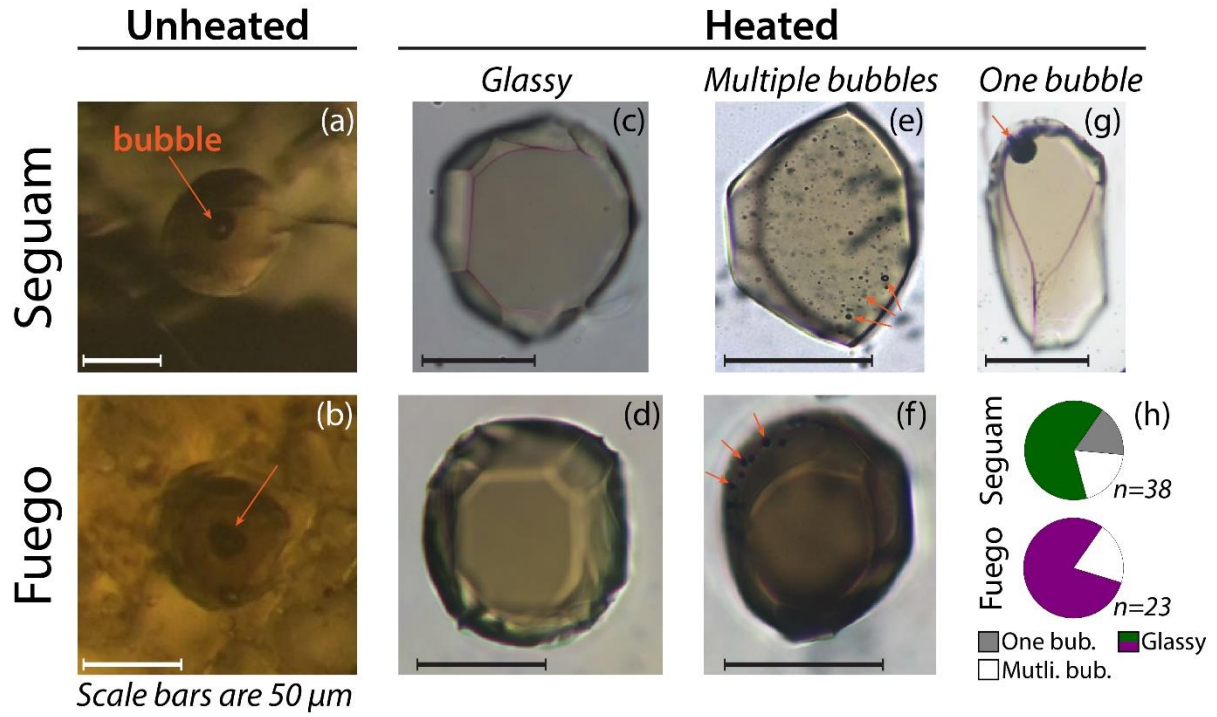


Figure A1. Photomicrographs of melt inclusion vapor bubbles.

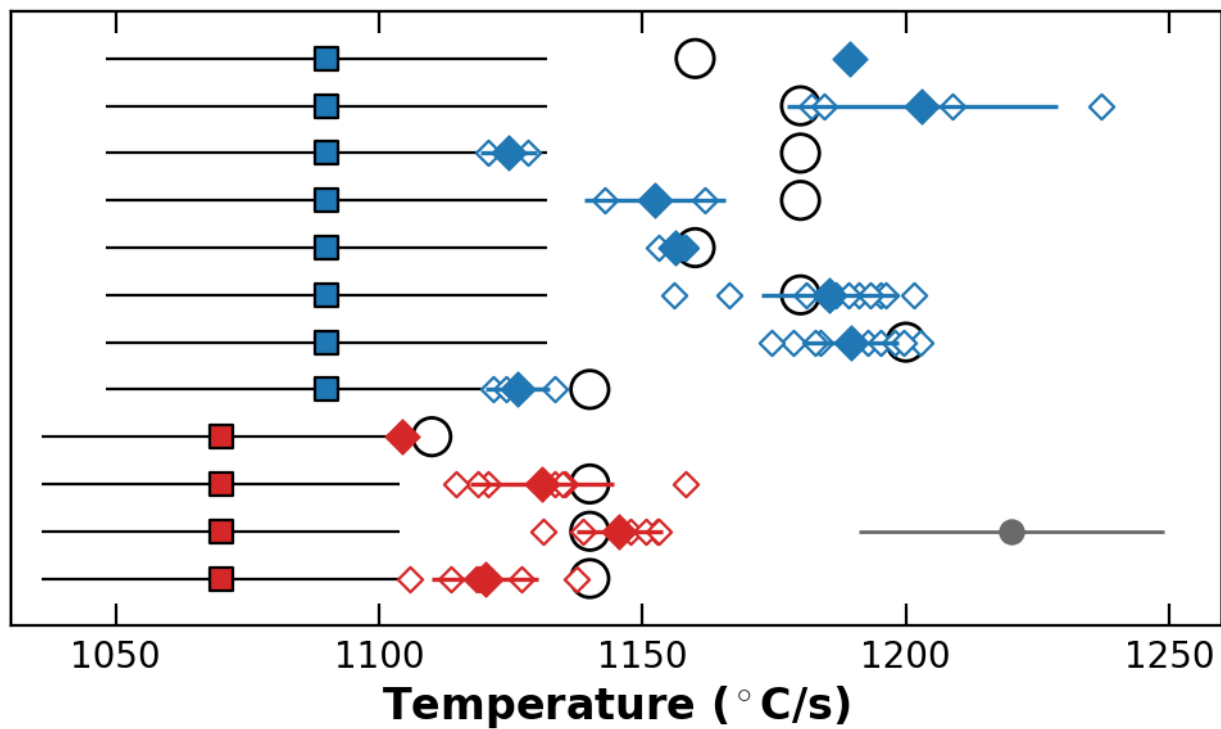


Figure A2. Melt inclusion thermometry.

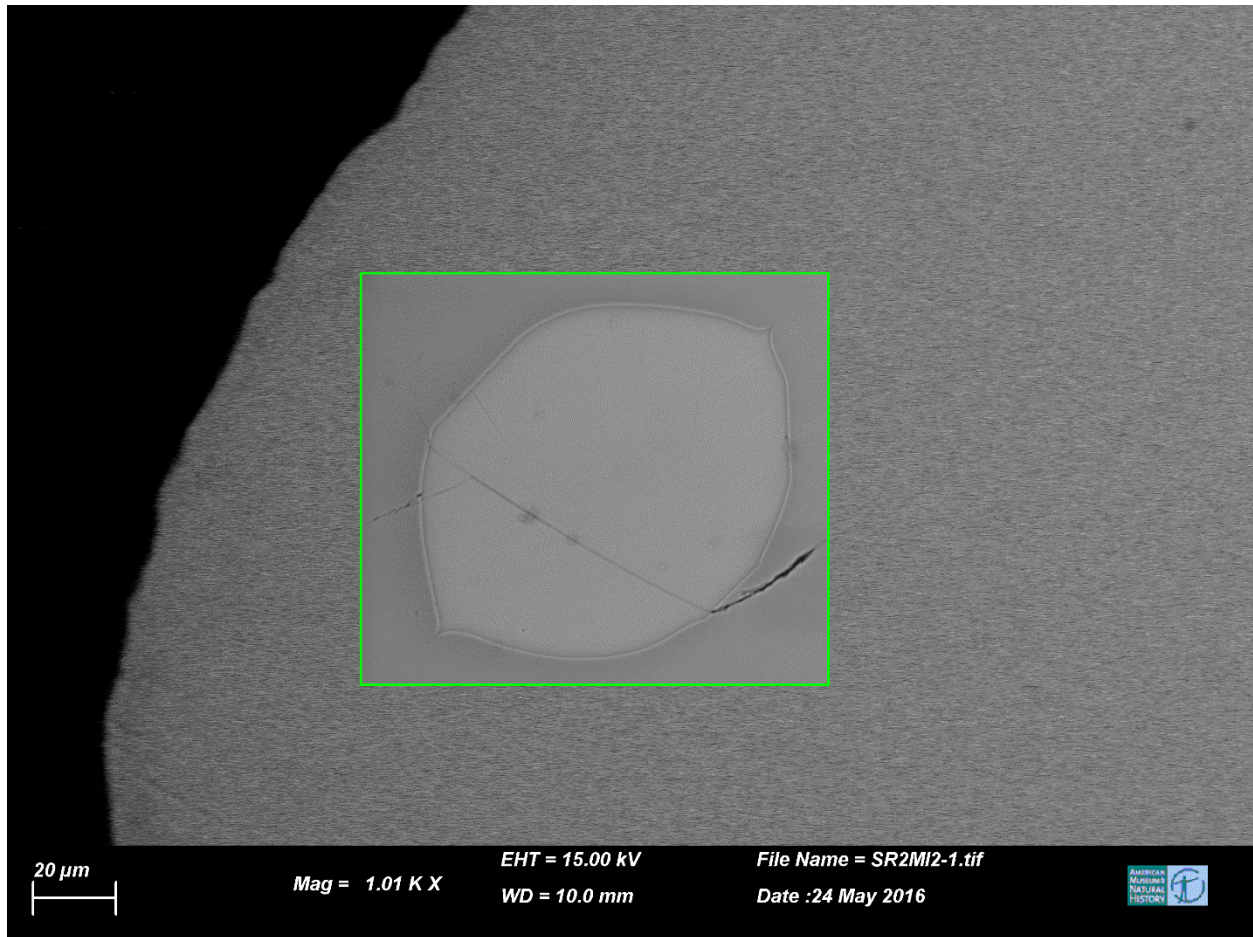


Figure A3. Backscatter electron image of an experimentally rehomogenized melt inclusion (SR02MI02). The dark halo around the melt inclusion has a lower mean atomic number (i.e., higher F_o) than the far field host. This is strong evidence of diffusive gain of Fe (and loss of Mg) in the melt inclusion.

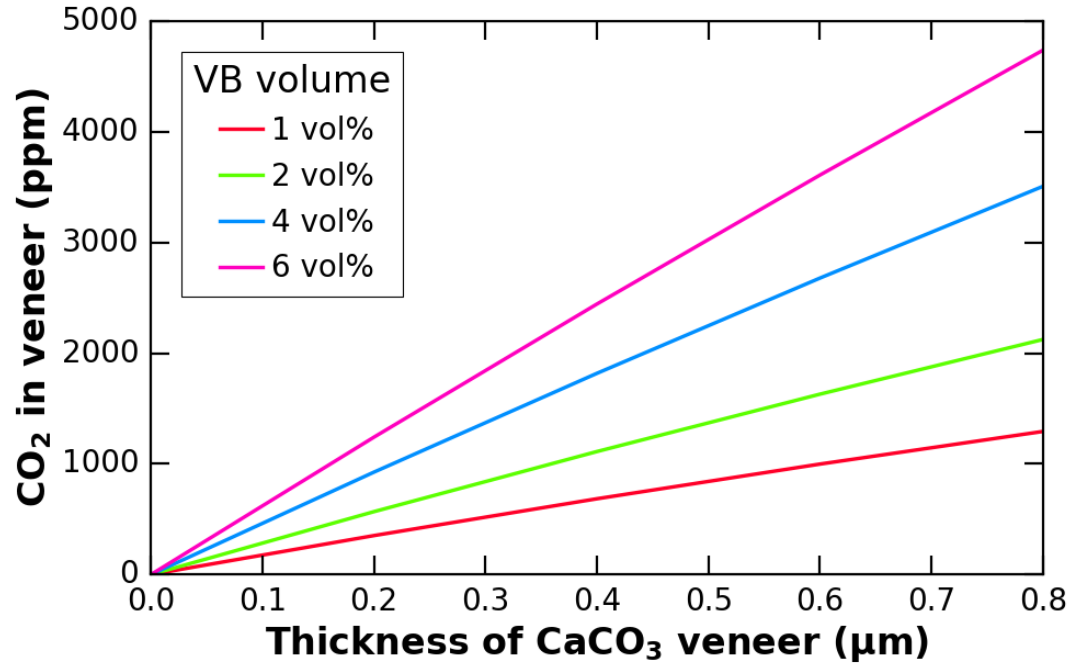


Figure A4. CO₂ content of melt inclusions that could be sequestered in a thin CaCO₃ veneer on covering the vapor bubble. Calculations are for a spherical melt inclusion with a radius of 50 μm.