

## Correction

# Correction: Identification of Novel Thymic Epithelial Cell Subsets Whose Differentiation Is Regulated by RANKL and Traf6



The *PLOS ONE* Staff

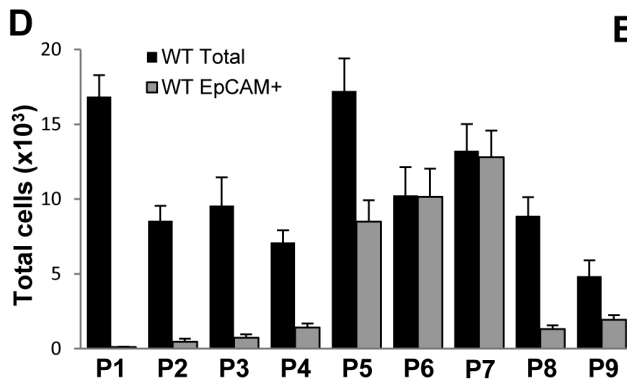
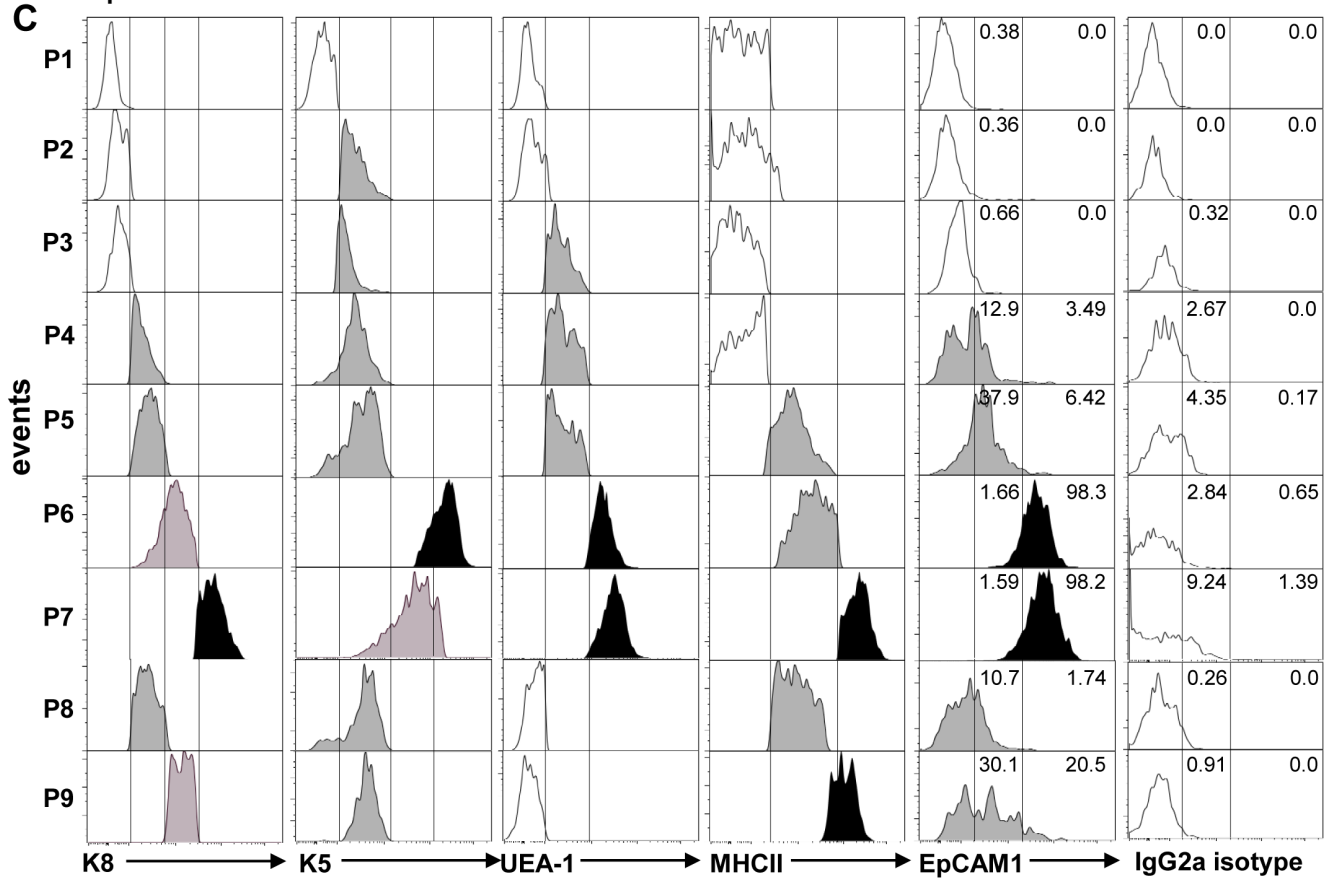
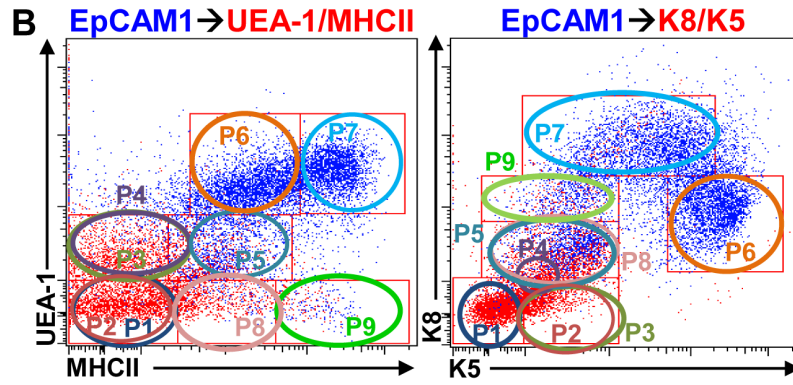
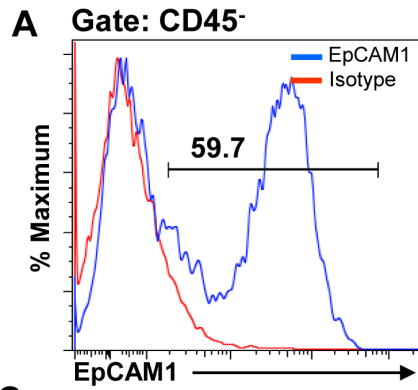
Figure 3 and its legend are incorrect. Please see the corrected Figure 3 here.

---

**Citation:** The *PLOS ONE* Staff (2014) Correction: Identification of Novel Thymic Epithelial Cell Subsets Whose Differentiation Is Regulated by RANKL and Traf6. *PLoS ONE* 9(10): e110921. doi:10.1371/journal.pone.0110921

**Published:** October 8, 2014

**Copyright:** © 2014 The *PLOS ONE* Staff. This is an open-access article distributed under the terms of the Creative Commons Attribution License, which permits unrestricted use, distribution, and reproduction in any medium, provided the original author and source are credited.



**E**

P1	K8 <sup>-</sup> K5 <sup>-</sup> UEA <sup>-</sup> MHCII <sup>-</sup> Aire <sup>-</sup> EpCAM1 <sup>-</sup> LY51 <sup>-</sup>
P2	K8 <sup>-</sup> K5 <sup>low</sup> UEA <sup>-</sup> MHCII <sup>-</sup> Aire <sup>-</sup> EpCAM1 <sup>-</sup> LY51 <sup>low</sup>
P3	K8 <sup>-</sup> K5 <sup>low</sup> UEA <sup>low</sup> MHCII <sup>-</sup> Aire <sup>-</sup> EpCAM1 <sup>low</sup> LY51 <sup>low</sup>
P4	K8 <sup>low</sup> K5 <sup>low</sup> UEA <sup>low</sup> MHCII <sup>-</sup> Aire <sup>-</sup> EpCAM1 <sup>low</sup> LY51 <sup>low</sup>
P5	K8 <sup>low</sup> K5 <sup>low</sup> UEA <sup>low</sup> MHCII <sup>int</sup> Aire <sup>-</sup> EpCAM1 <sup>low</sup> LY51 <sup>low</sup>
P6	K8 <sup>int</sup> K5 <sup>hi</sup> UEA <sup>hi</sup> MHCII <sup>int</sup> Aire <sup>+/-</sup> EpCAM1 <sup>hi</sup> LY51 <sup>low</sup>
P7	K8 <sup>hi</sup> K5 <sup>int</sup> UEA <sup>hi</sup> MHCII <sup>hi</sup> Aire <sup>+</sup> EpCAM1 <sup>hi</sup> LY51 <sup>low</sup>
P8	K8 <sup>low</sup> K5 <sup>low</sup> UEA <sup>-</sup> MHCII <sup>int</sup> Aire <sup>-</sup> EpCAM1 <sup>low</sup> LY51 <sup>low</sup>
P9	K8 <sup>int</sup> K5 <sup>low</sup> UEA <sup>-</sup> MHCII <sup>hi</sup> Aire <sup>-</sup> EpCAM1 <sup>int</sup> LY51 <sup>hi</sup>

**Figure 3. EpCAM1<sup>+</sup> cell distribution in different TEC cell subsets.** (A and B) EpCAM1<sup>+</sup> cells gated on CD45<sup>-</sup> epithelial cells were overlaid on UEA/MHCII and K8/K5 dot plots (blue dots). (C) EpCAM1 and other marker expression levels for each cell subset were analyzed by flow cytometry on histograms. An isotype control was used to differentiate EpCAM1<sup>+</sup> from EpCAM1<sup>-</sup> cells. (D) Total numbers of all CD45<sup>-</sup> cells gated as well as EpCAM1<sup>+</sup> cells within the different gates were determined by flow cytometry. (E) Nomenclature assignments of the TEC subsets identified. Bar graphs represent the mean+SEM. n = 16, results were pooled from at least three independent experiments.  
doi:10.1371/journal.pone.0086129.g003

## Reference

1. Danzl NM, Jeong S, Choi Y, Alexandropoulos K (2014) Identification of Novel Thymic Epithelial Cell Subsets Whose Differentiation Is Regulated by RANKL and Traf6. *PLoS ONE* 9(1): e86129. doi:10.1371/journal.pone.0086129